

ACCESS ALL

CARE & TRAINING SOLUTIONS



Newsletter

December 2019

Issue 27

Dear <<First Name>>,

Firstly we want to wish a very happy 2020 to you all!

We hope you all had a lovely time celebrating the New Year and a fabulous Christmas.

We would like to thank all our staff who worked over Christmas and New Year. We know the families were very grateful, and thank you to the families for embracing the staff at this time. We would also like to thank everyone who sent lovely Christmas gifts to the office we really appreciate them.

We had a great time in the office in the build up to Christmas. Christine ran trial activity sessions making Christmas decorations and presents which was attended by a variety of people. There was a great atmosphere and brilliant presents were made. Thank you to all who attended and to the staff who made it happen! Please look at the photos in the newsletter to see the enjoyment had by all!

This month sees more staff training in the office and we welcome you all to attend and partake with enthusiasm as always!

Thank you to our trainers who have loyally supported our staff development throughout the year, Raphella Derrick, DG Medics and Bailey Training.

It's hard to believe we are into the New Year already. We thank you all for coming on our "Outstanding" 2019 journey with us and we can't wait to see what this year brings.

We wish you all very happy and healthy New Year - 2020 bring it on!

Thank you to everyone for your hard work and support!

Take Care

Amy and Mary

Employee of the Month



Our December Employee of the Month is Erin Holden.

Erin was nominated for the support she has given to a new member of staff who she has been a Mentor to as part of our new mentoring scheme. Through the advice she gave the staff member it demonstrated she has learnt this year and her passion for delivering personalised care.

This is exactly what we wanted our Mentors to do as it really helps our new staff understand the ethos and culture of Access All and makes them feel part of our team.

In addition to this Erin is reliable and flexible and goes above and beyond for the Service Users she supports. Thank you and congratulations!

Remember you can nominate anyone of our team leaders or carers for employee of the month

All you need to do is send us an email or give us a call to let us know who you would like to nominate and what they have done to go above and beyond that month. The successful nominee will be revealed in the newsletter each month and the successful employee will receive a voucher.

Christine's Christmas Craft Workshops Reviewed by Zarie





A big thank you to Christine for running our Christmas craft workshops at the office. The picture show there was a lot of fun had by everyone who came.
Check out Zarie's review below.

Good things

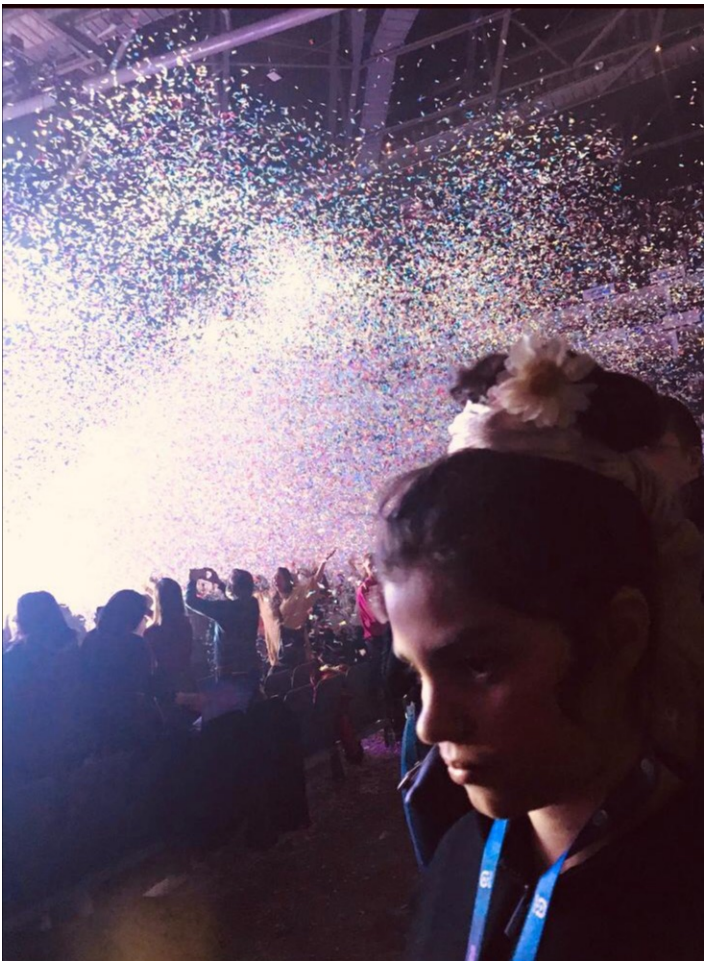
I was able to touch the ingredients of the bath bombs and mix with my hands. It was accessible for disabled people as well as fun. You were able to make things yourself for other people for Christmas as well as yourself. It's a good way of getting Christmas presents prepared if you don't like busy places or shopping or if you haven't had time to do your shopping. You were able to make things for many people.

The bath bombs had cool mold shapes. There were a variety of oil and scents to add including fruity scents, sweet scents, and minty scents and rose petals or lavender could be added. There was food colouring to make your bath bomb look nice. At the end the bath bombs smelled very fresh; perfect before a night out or after the gym.

The reindeer treats were something to make and look nice but also had chocolate in them to eat. It is a cool way of wrapping chocolate in a Christmasy way. I also liked the idea of having chocolate in the marshmallows as it is different and interesting at Christmas as well as tasty.

Musical statues was fun as upbeat Christmas music was played and the children stopped the music and there was a judge. You were also able to pick songs afterwards. They used Alexa to play songs so the visually impaired could talk to her and you could do it from wherever you were because Alexa could hear you.

Jingle Bell Ball review by Zarie



Last month Jess and Zarie had a great afternoon at the Capital FM Jingle Bell Ball. They got to dance and sing to all their favourite songs from Sam Smith, Taylor Swift and Tom Walker. Zarie has written a review of this for us:

Good things

Audience participation

The audience were asked to sing on their own and with the singer. Whether you knew the words or not you could still participate in the singing, by making them up or following. Every person participated and was included in the ball. The audience were also asked to put their hands in the air, dance and wave their arms around. There was a lot of loud screaming involved.

Warnings

It was very loud. Your ears may ring afterwards. You were asked to sing. You were being filmed. You were asked to stand up. You have to wait a long time at the beginning before the show starts.

My order from favourite singer to least favourite singer

Anne Marie, Tom Walker, Sam Felt, Taylor Swift, Joel Corry, Aj Tracey, Sam Smith, Mabel, Sigala, The Script.

Anne Marie was my favourite because she asked the audience to sing on their own at one point and her voice was amazing. She was first up and she motivated the whole audience.

The script were my least favourite as their projection wasn't very good and I didn't know many of their songs.

Christine's Corner

Stratford Circus



Mischievous, wintery show where magical characters, hilarious creatures and hidden lands are brought to life through light, sensory stories, shadow play and music. Arts and crafts are available after the show.

Ear defenders and options for those who are light sensitive will be provided. A quiet space will also be available during the performance for audience members who may need it.

-Aimed at under 5's but all are welcome.

When & Where

17 January | Stratford Circus Arts Centre, Theatre Square, E15 1BX | 13:30

Price

£8-£10

Nearest Transport links

Stratford and Stratford high street overground

Nearest Car Park

Stratford multi-storey car park (entrance off Great Eastern Road), which has 675 spaces with 38 spaces dedicated for blue badge holders. There are also eight accessible bays on Salway Road within 10 metres of Stratford Circus

(behind the Picture House).

Nearest changing facility
Westfields shopping centre

[Click here form more information](#)

Chinese New Year



Come celebrate the Chinese New Year with the National Gallery. They will be hosting many workshops throughout the building that are free (some require

booking but most are drop-in sessions.) Some examples of what to expect are:
A colourful dance inspired by the art of paper cutting by children from UK China
Performing Arts. Following the performance, join in as they teach you traditional
moves. Make delicious sweet dumplings with your family to take home to cook.
Learn new year greetings and discover more about traditional recipes with
Happy Mandarin.
Illustrate your own game cards and discover more about the animals of the
zodiac

When & Where
National Gallery
Trafalgar Square, London
WC2N 5DN

Sunday, 26 January 2020 | 13.30 - 14:00

Price
Free drop in sessions all over the national gallery

Nearest Transport Links
Charring Cross and Leister Square Stations

Nearest changing facility
Changing places
Victoria Embankment Gardens
Near Villiers Street
London
WC2N 6NL

[Click here form more information](#)

Canary Wharf Lights



Canary Wharf will be transformed by over 25 spectacular interactive light installations, brightening even the darkest winter nights. You will be able to download a map that will help you get around and find all of the art (available via the website.)

When & Where

16 - 25 January | All around Canary Wharf | It is best enjoyed between 4-10pm

Price

Free! Go have a wonderful wonder around.

Nearest Transport links

Canary Wharf, Canary Wharf and Heron Quays DLR

Nearest Car Park

Blue badge spaces available:

8 in Cabot Square Car Park

21 in Canada Square Car Park

9 in Jubilee Place Car Park

4 in Westferry Circus Car Park

Nearest changing facility

Canada Place and Churchill Place both have hoist facilities.

[Click here form more information](#)

Chickenshed Theatre



Want to get into performing but not sure how? Well this is perfect for those just looking for a fun afternoon of drama, dancing and singing in a fun and inclusive space.

When & Where

25 January 2019 | 13:00-14:30 (5-8yrs, from school Year 1) or 15:00-16:30 (9-12yrs) | Chickenshed Theatre, Chase Side, N14 4PE

Price

£8

Nearest Stations

Cockfosters station (10 min walk) - Not wheelchair accessible.

Buses: 298, 299, 307, N91 (2 min walk)

Nearest Car Park

Parking available on-site with limited blue badge spaces.

Nearest changing facility

Chickenshed has hoist facilities on the first floor. Ask at reception for the code.

[Click here form more information](#)



Copyright © 2020 Access All Care and Training Solutions Ltd., All rights reserved.

Want to change how you receive these emails?
You can [update your preferences](#) or [unsubscribe from this list](#).

